

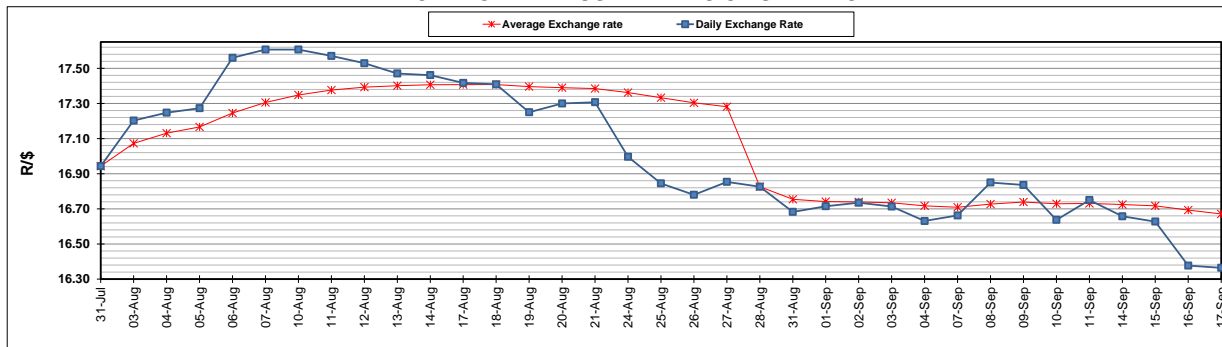
	PETROL 95 ULP	PETROL 93 ULP & LRP	DIESEL 0.05%	DIESEL 0.005%	ILL. PAR.
GAUTENG PUMP PRICE (SA c/l) AS FROM 02/09/2020	1,518.000	1,489.000	-	-	-
WHOLESALE PRICE (SA c/l) AS FROM 02/09/2020	-	-	1,327.560	1,331.960	716.828
SINGLE NATIONAL MAXIMUM RETAIL PRICE	-	-	-	-	899.000
BASIC FUEL PRICE - 17/09/2020 (SA c/l)	540.889	528.154	480.124	482.681	438.523
PRESS RELEASE CONTRIBUTION TO BFP 02/09/2020 - 17/09/2020 (SA c/l)	565.470	546.470	576.630	581.030	512.128
UNIT OVER/(UNDER) RECOVERY - 17/09/2020 (SA c/l)	24.581	18.316	96.506	98.349	73.605
AVERAGE BASIC FUEL PRICE 28/08/2020 - 17/09/2020	529.827	519.851	491.519	493.625	433.369
AVERAGE UNIT OVER/(UNDER) RECOVERY 28/08/2020 - 17/09/2020	36.503	27.479	89.311	91.605	83.959

ANALYSIS MOVEMENT OF AVERAGE OVER/(UNDER) RECOVERY

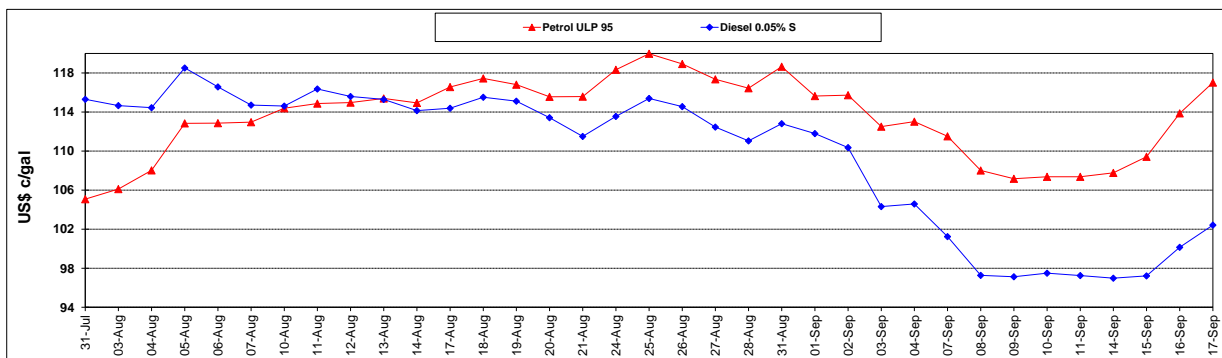
	PETROL 95	PETROL 93	DIESEL 0.05%	DIESEL 0.005%	ILL. PAR.
- MOVEMENT IN INTERNATIONAL PRODUCT PRICES	17.104	8.445	71.314	73.531	68.091
- MOVEMENT IN EXCHANGE RATE	19.399	19.034	17.997	18.074	15.868
AVERAGE UNIT OVER/(UNDER) RECOVERY 28/08/2020 - 17/09/2020	36.503	27.479	89.311	91.605	83.959

R/\$ EXCHANGE RATE - (R/\$16.3643 - 17/09/2020)

EXCHANGE RATE USED IN BASIC FUEL PRICE



INTERNATIONAL PRODUCT PRICES OF BASKET USED IN BASIC FUEL PRICE



BASIC FUEL PRICE IN SA CENTS PER LITRE

